

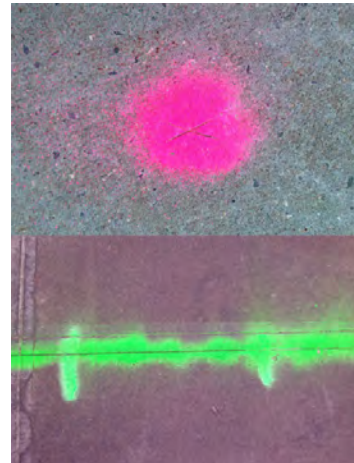
# 33 Orchard

## Pat Place *Street Markings 2011-2016*

October 27 - December 11, 2016

Opening Reception: Thursday, October 27, 2016 from 6-8 pm.

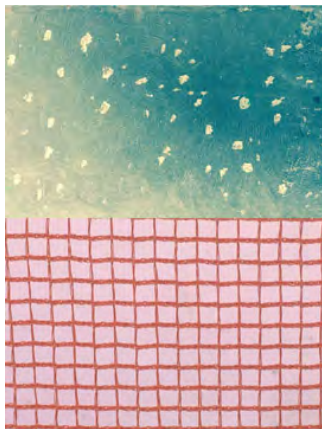
Gallery hours: Wednesday - Sunday 12-6 pm.



Pat Place, *Untitled (Street Markings)*, 2011-2016, 2 color photographs, Edition of 15, 8 x 5 3/4 in. (image), 14 x in. (frame)

Jane Kim is delighted to announce Pat Place's exhibition *Street Markings 2011-2016*, opening Thursday, October 27, 2016 from 6-8 pm at 33 Orchard.

Five to six years ago, Pat Place started photographing markings for drilling sites on the streets of New York and Los Angeles with her iPhone camera. Often marked in florescent pinks, greens, and yellows, some as geometric forms, the images inspired Place as a connection to painting. She continues to shoot sidewalks, capturing paint marks, leaves, nails embedded into the cement, gum, dirt and trash. The result is an astonishing collection of photographs, printed without digital enhancing technology.



Pat Place, *Untitled (Street Markings)*, 2011-2016, 2 color photographs, Edition of 15, 8 x 5 3/4 in. (image), 14 x 11 in. (frame)

Place's artistic process has always remained simple as part of her strategy to make her work relevant to popular culture. She uses whatever camera is available (usually her phone), and creates pairings of diptychs, and groupings of the 4 x 6 inch prints. The placement of photos together is like her paintbrush to the canvas. Scouring through her archive of thousands of street photos, she realized the tonalities of color and texture that emerge are surprisingly similar to formal references to the history of Abstract Art from the 40's to today. The marking also contain the element of time as they document new construction and changes happening to New York.

Pat Place is a musician and visual artist who was one of the founding members of The Contortions and Bush Tetras. She continues to play and tour with the Bush Tetras. She is currently participating in *Paradise: underground culture in NYC 1978-84*, at

Steven Harvey Fine Art, New York (through November 14). *Street Markings 2011-2016* is Place's second one person exhibition at 33 Orchard.

33 Orchard is located 33b Orchard Street between Hester and Canal Streets in the Lower East Side. The gallery hours are Wednesday to Sunday from 12 - 6 pm. For question or images, please contact Jane Kim at [office@33orchard.com](mailto:office@33orchard.com) or +1 347 278 1500.